

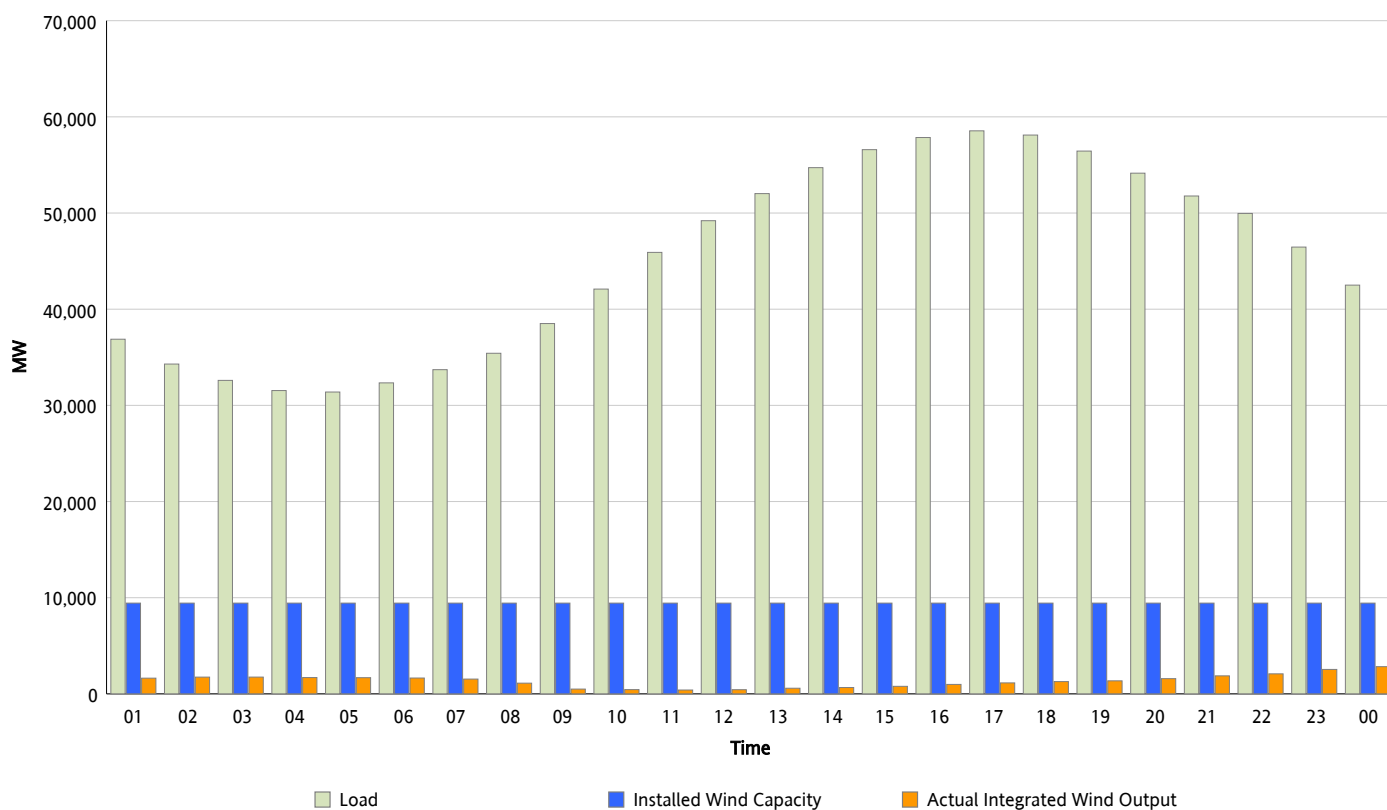


ERCOT Grid Operations

Wind Integration Report : 06/22/2012

Peak Load	58,547 MW
Load Peak Hour (HE)	17
Wind Over Peak	1,142 MW
Wind Record 06/19/12	8,368 MW
Max Wind Value*	2,895 MW
Wind Peak Time	23:12
Wind Integration %	6.64 %

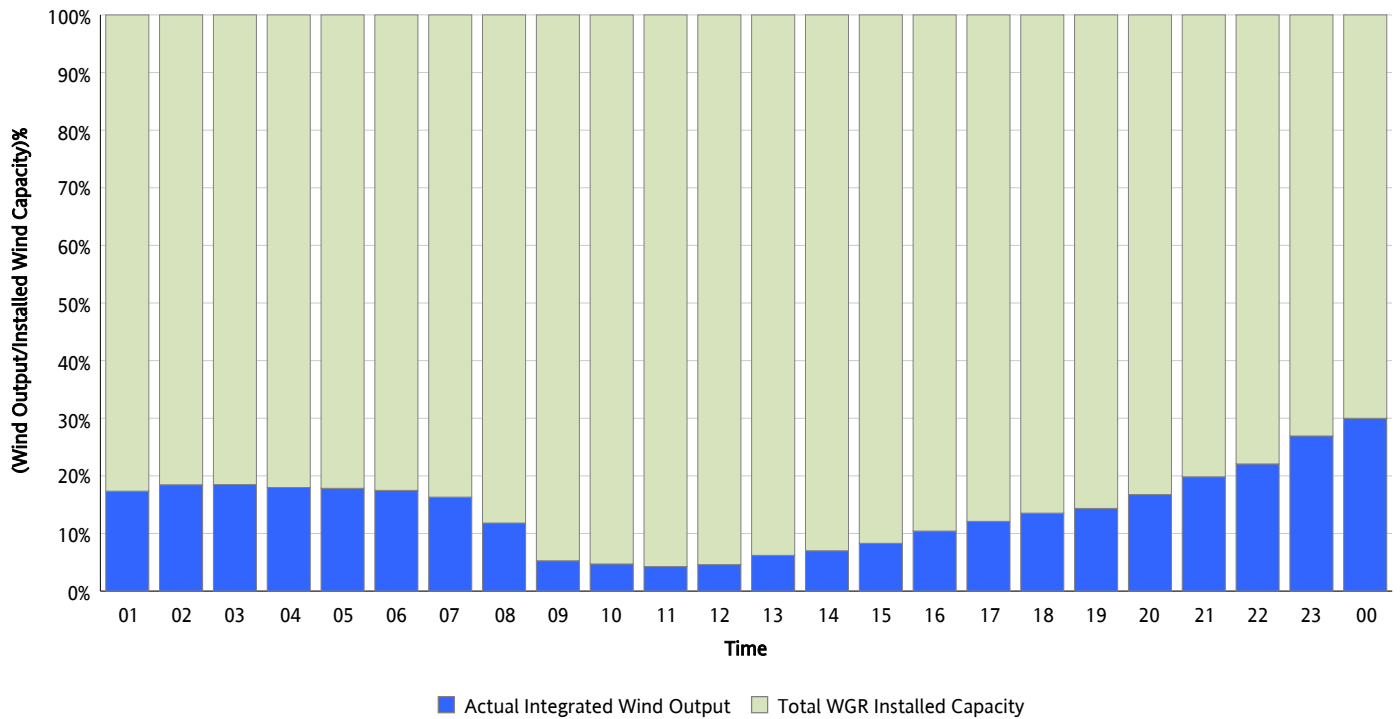
Hourly Average Actual Load vs. Actual Wind Output
06/22/2012



** Wind Record and Wind Max represent instantaneous values and the rest of the values are integrated over the hour*

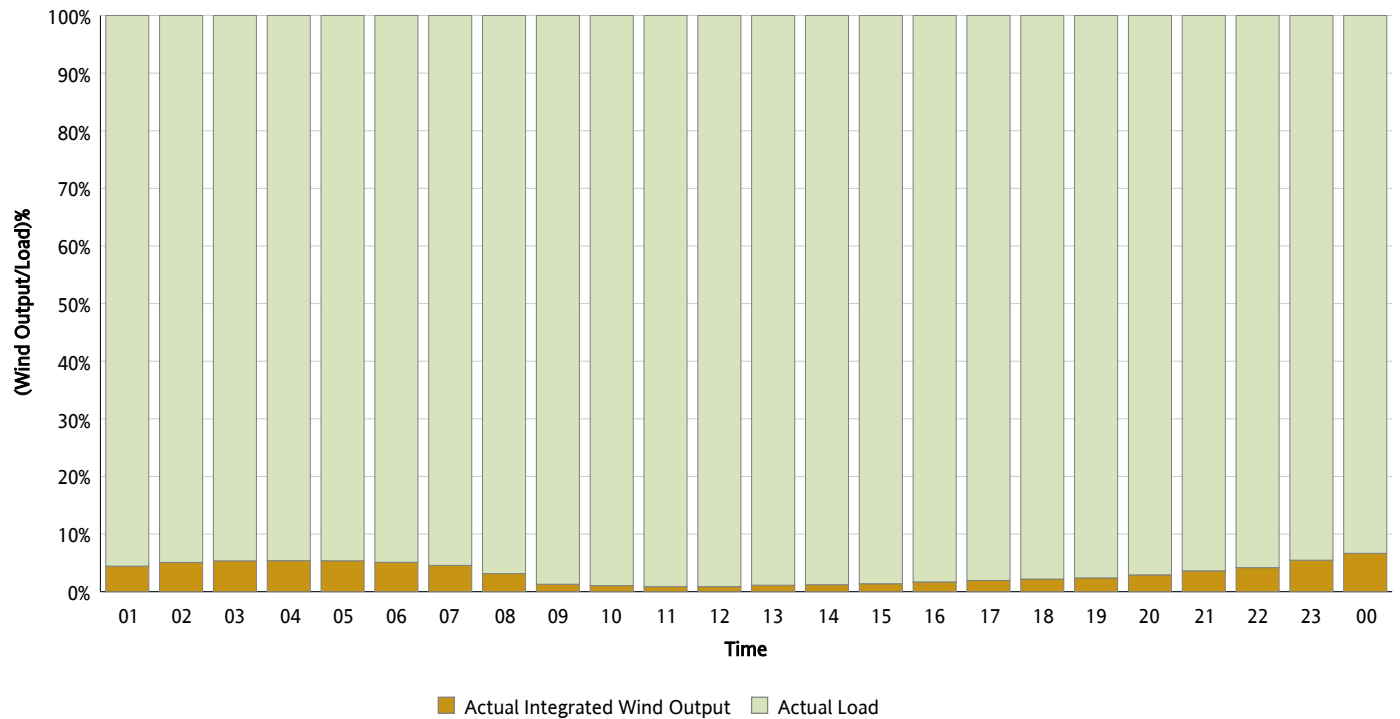
Actual Wind Output as a Percentage of the Total Installed Wind Capacity

06/22/2012



Actual Wind Output as a Percentage of the ERCOT Load

06/22/2012



ERCOT Load vs. Actual Wind Output

06/15/2012 - 06/22/2012

